

Distal AVF

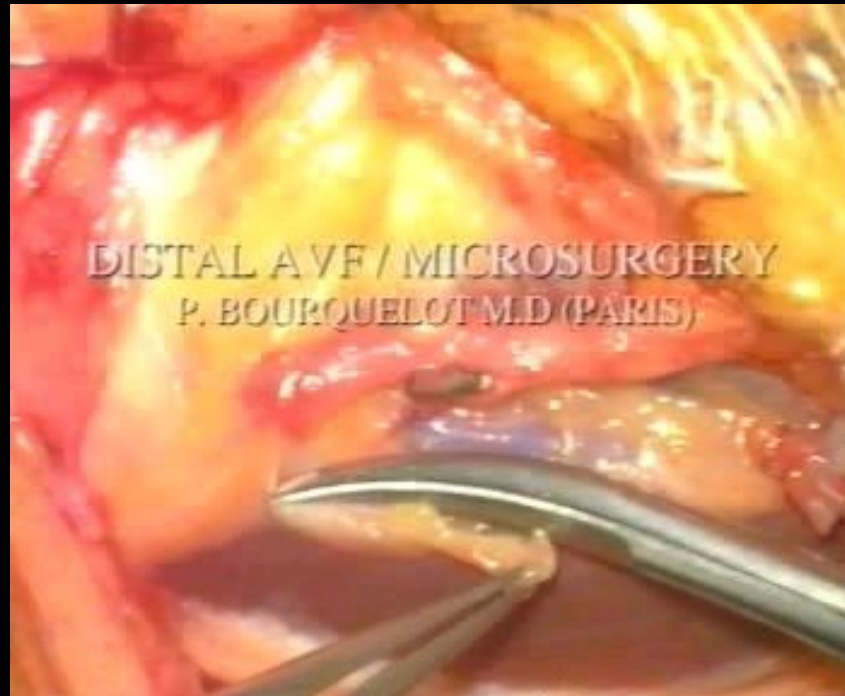
Creation using

Tourniquet & Operative Microscope

Pierre Bourquelot

Clinique Jouvenet, Paris

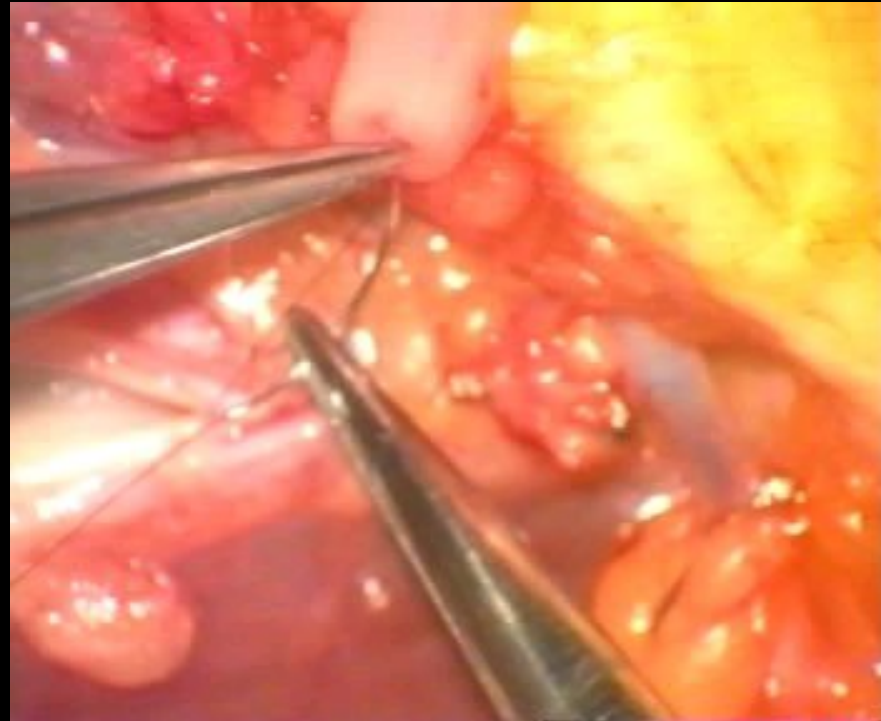
pbourquelot@sfav.org



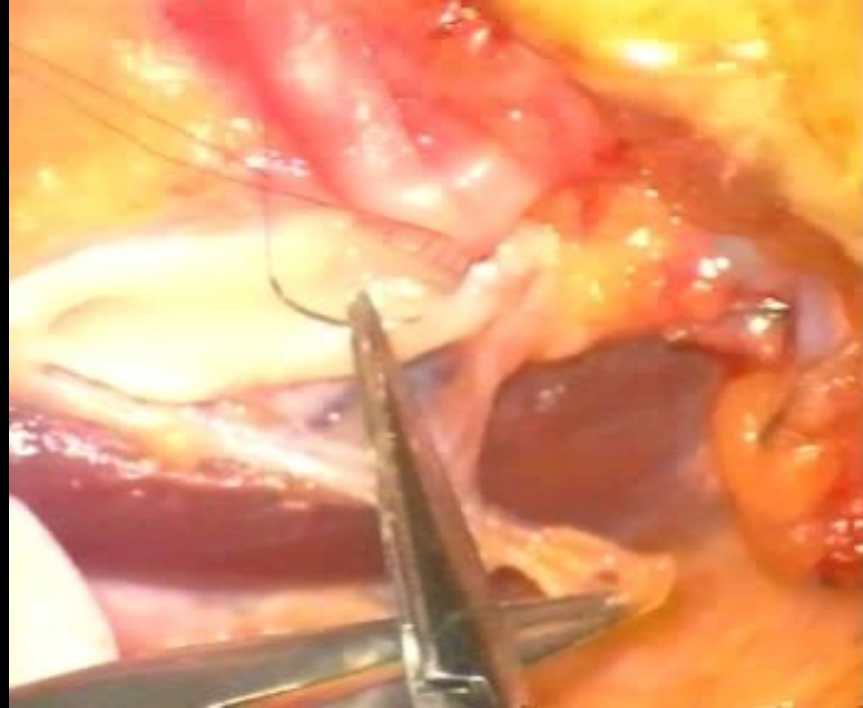
The vascular sheath is opened.

A posterior incision of approximately 10 mm in length is performed in the proximal vein

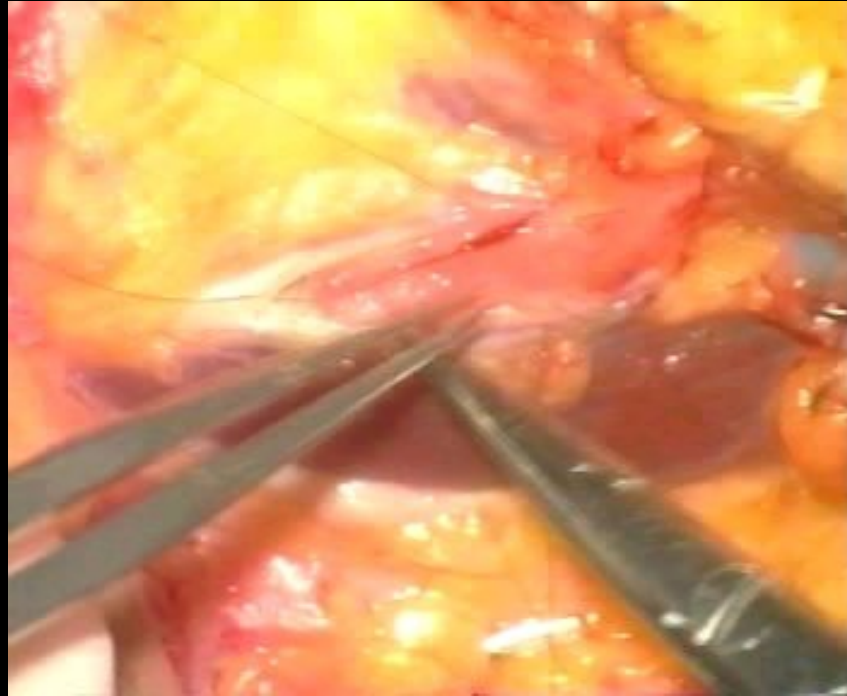
The anterior wall of the artery is opened, without previous arterial dissection and clamping thanks to prophylactic hemostasis.



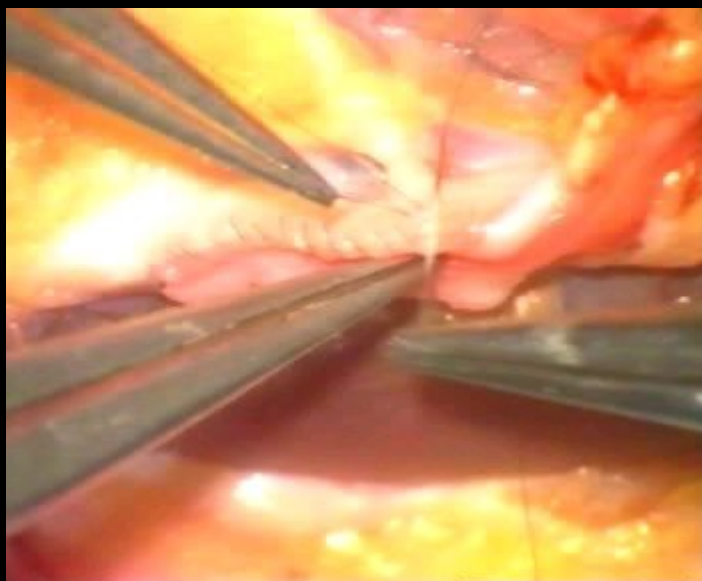
The anastomosis is made with four running sutures, first suturing the proximal angle.



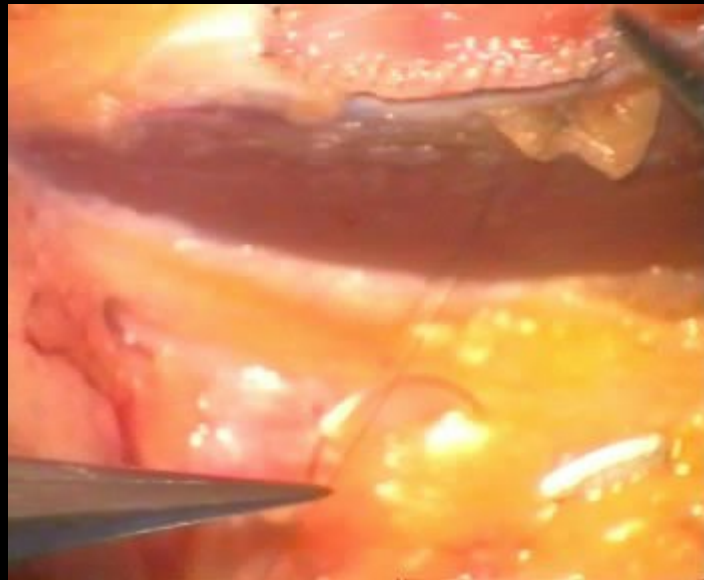
Both proximal running sutures, posterior and anterior,
are stopped at the middle of the arteriotomy



The anastomosis is completed starting from the distal angle



Both posterior running sutures are tied together



Both anterior sutures are tied together

The anastomosis is about 10 mm.



The tourniquet is released

Patency is confirmed by sterile Doppler ultrasound examination : permanent signal + systolic re-inforcement

The end