



RETARDS DE MATURATION

Chirurgie des sténoses

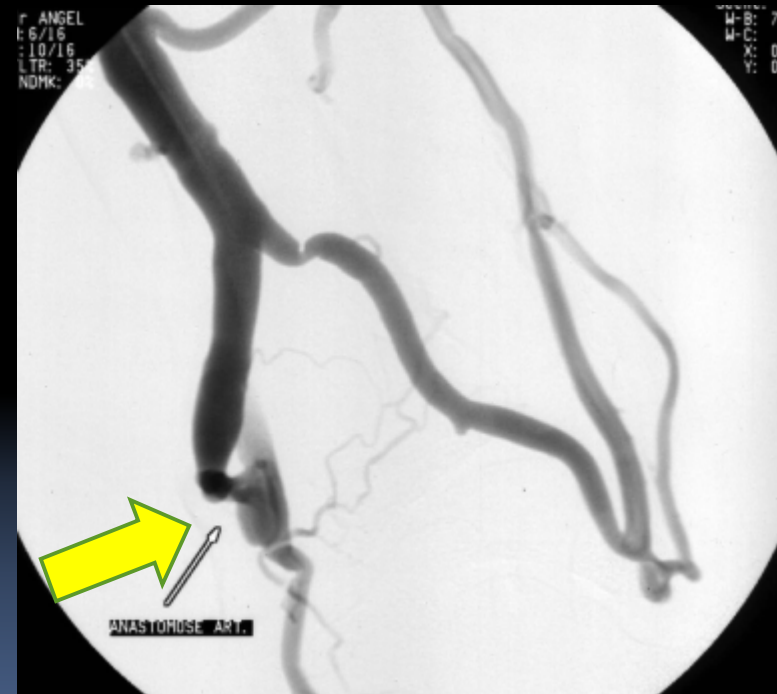
Superficialisation par lipectomie

Pierre Bourquelot, Paris

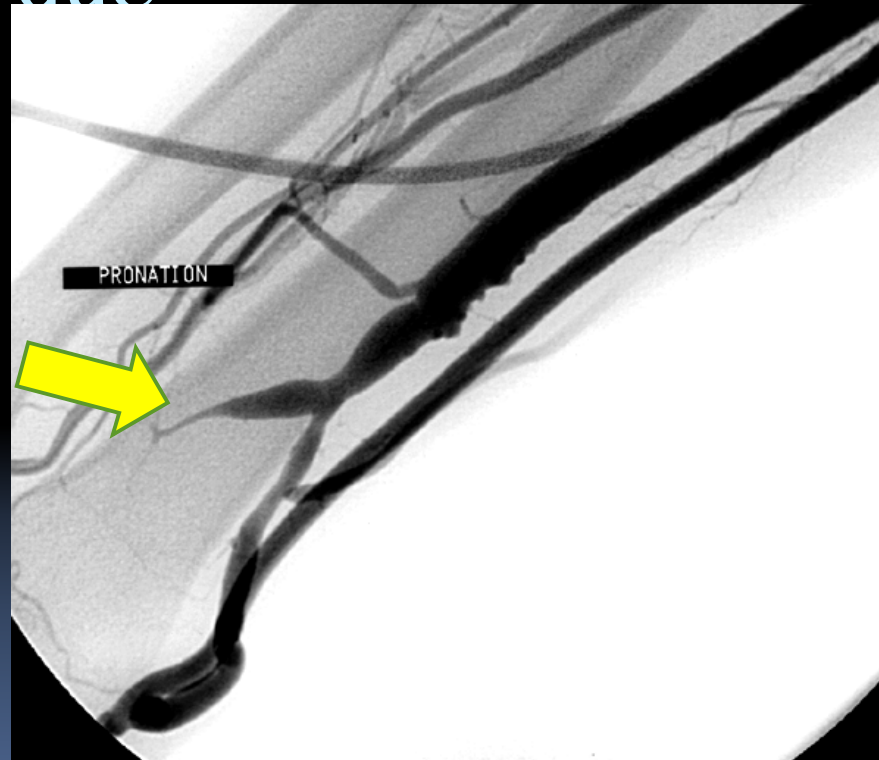
1) Chirurgie des sténoses

**2) Superficialisation par
Lipectomie**

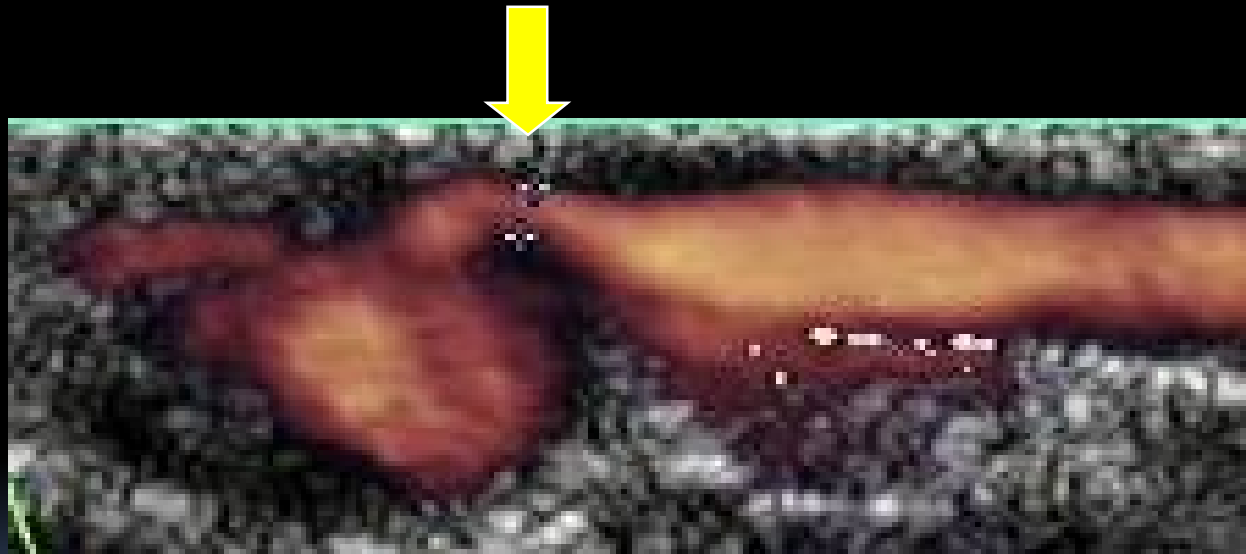
Sténose Veineuse Juxta- anastomotique



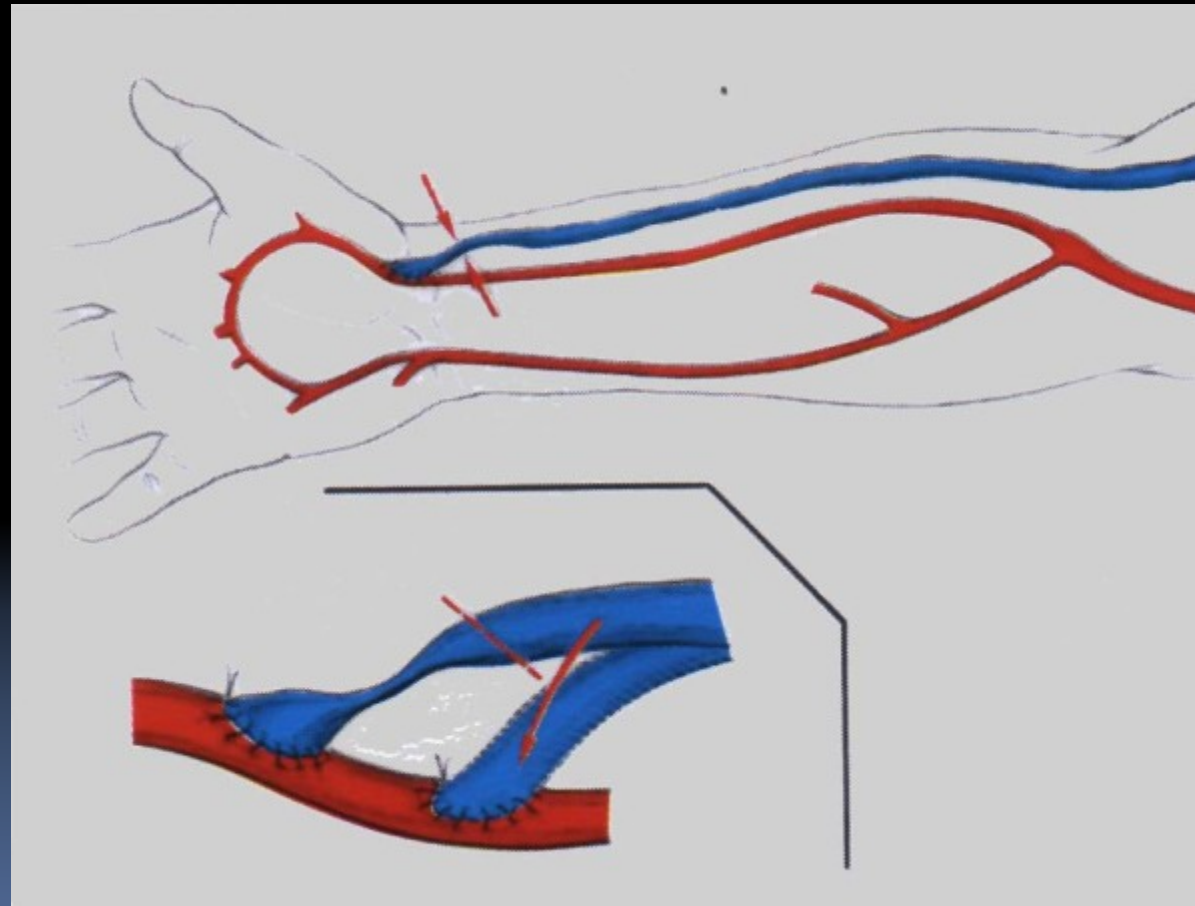
Sténose Veineuse Juxta- anastomotique



Sténose Veineuse Juxta-anastomotique

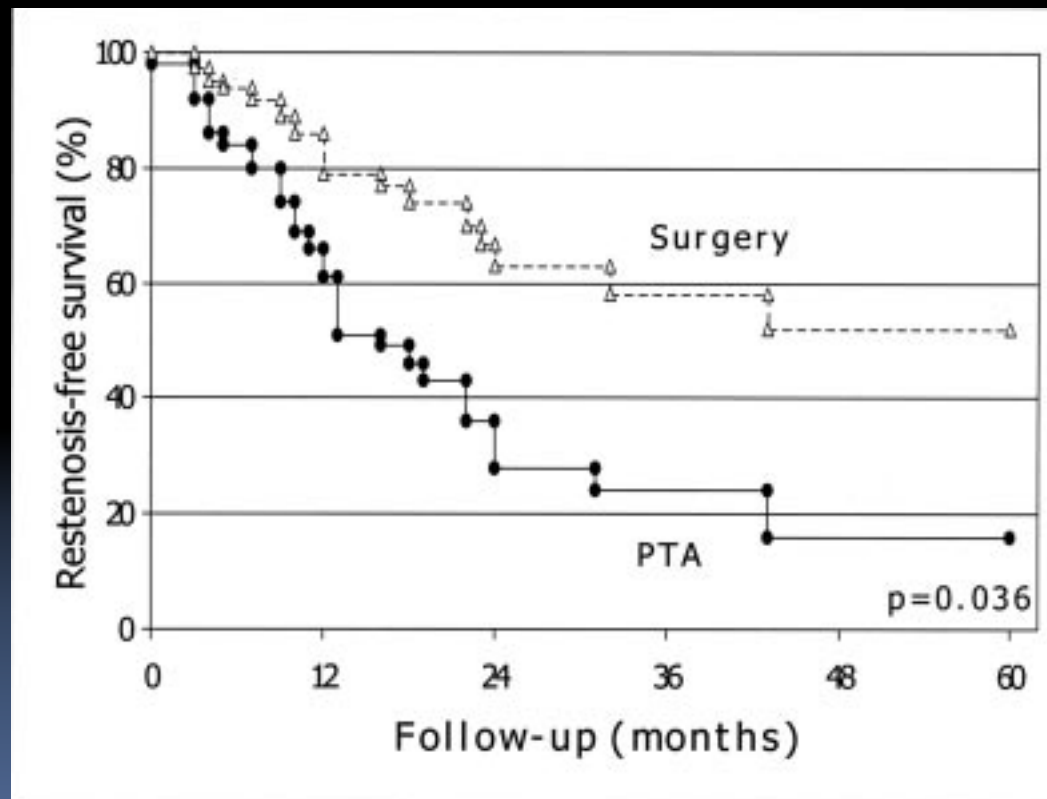


Réfection Anastomose



Surgery Vs. Endovascular Preemptive Repair of Juxta Anastomotic Stenosis

N. Tessitore 2006



Perianastomotic stenosis of direct wrist autogenous radial-cephalic arteriovenous accesses for dialysis: Transluminal angioplasty or surgery?
Long et al JVS 2010

	AEP	Chirurgie
N patients	52	21
Perméabilité Primaire à 1 an	41 %	71 %

Perianastomotic stenosis of direct wrist autogenous radial-cephalic arteriovenous accesses for dialysis: Transluminal angioplasty or surgery?
Long et al JVS 2010

§ Traitement utilisé:

- ú Chirurgie : n = 21

- ú AEP : n = 52

§ Perméabilité primaire à 1 an

- ú 71 % pour la chirurgie

- ú 41 % pour l'AEP

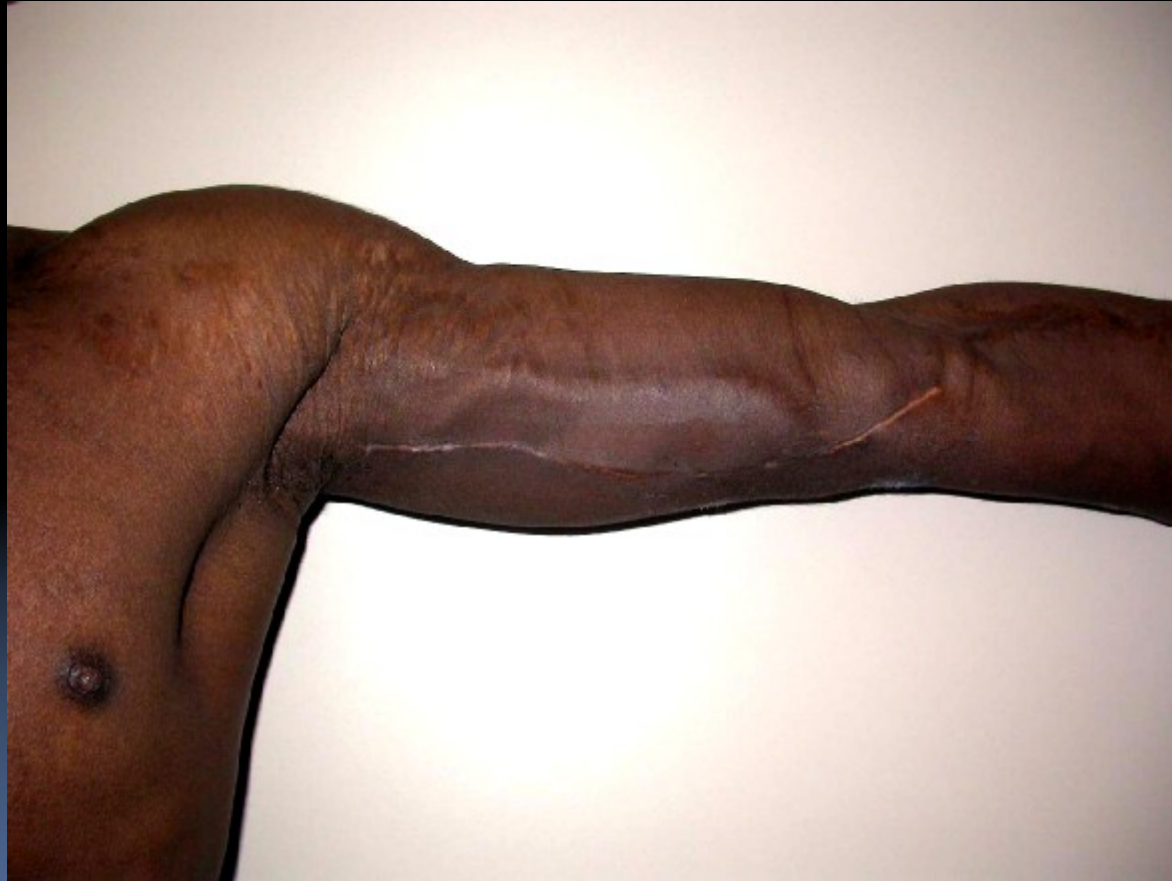


1) Chirurgie des sténoses



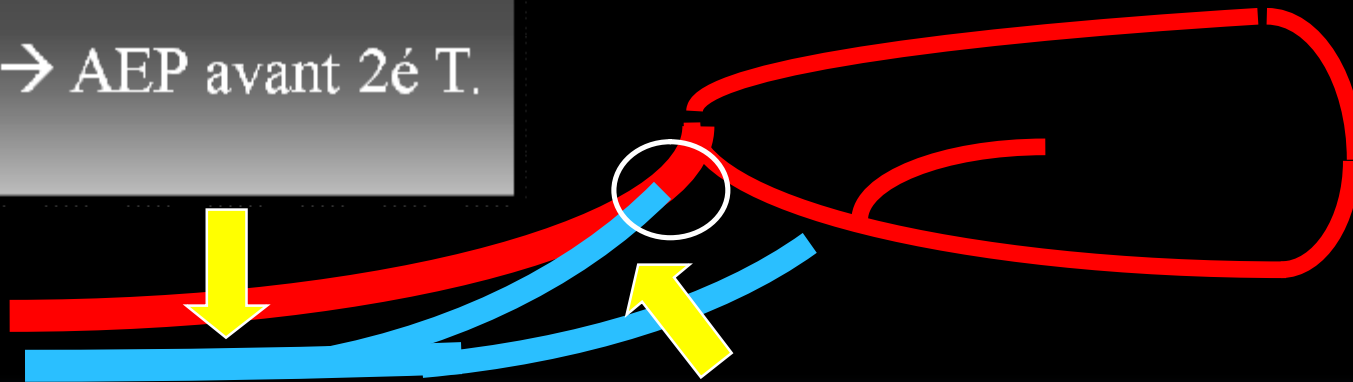
2) Superficialisation par
Lipectomie

Superficialisation par Tunnellisation



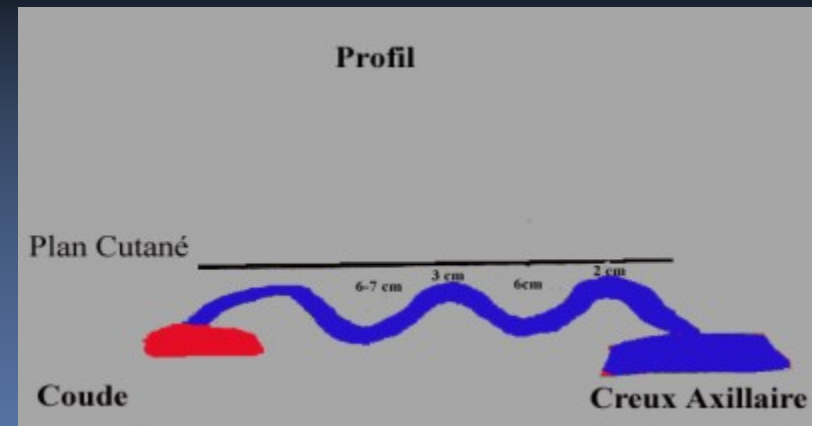
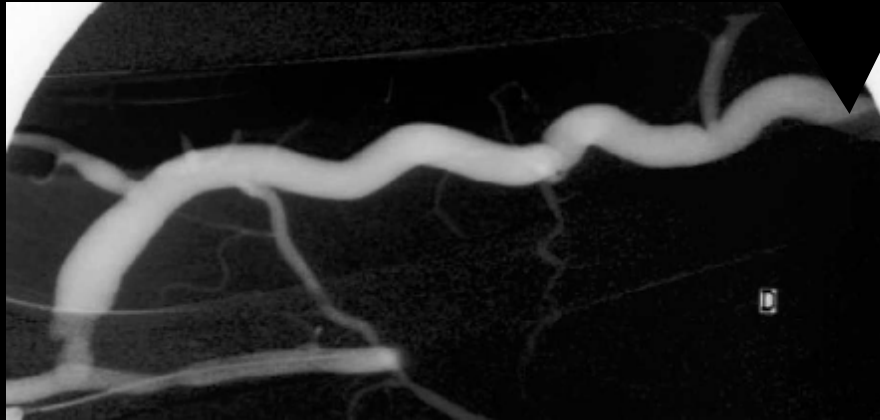
Après 1er Temps Basili que

Sténose à distance
de l'anastomose
→ AEP avant 2é T.



Sténose juxta-anastomotique
→ Réfection chirurgicale au 2é
Temps.

Superficialisation Basili que
« Montagnes russes » ou trop profonde
-> redo

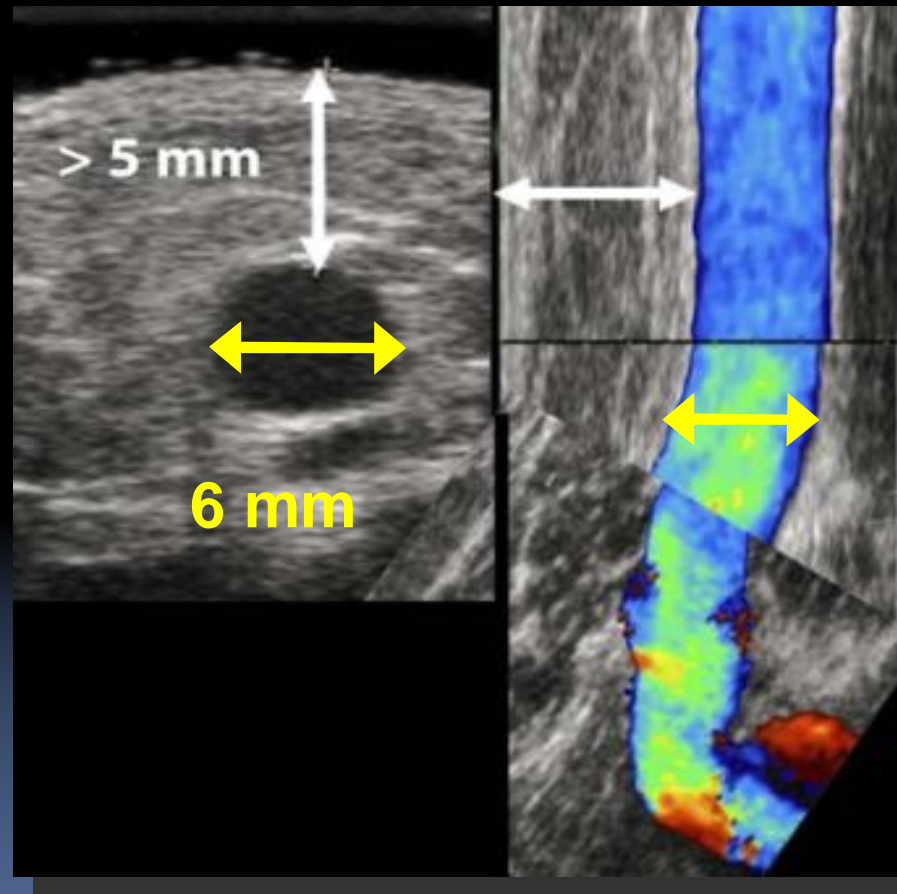


Superficialisation par Lipectomie



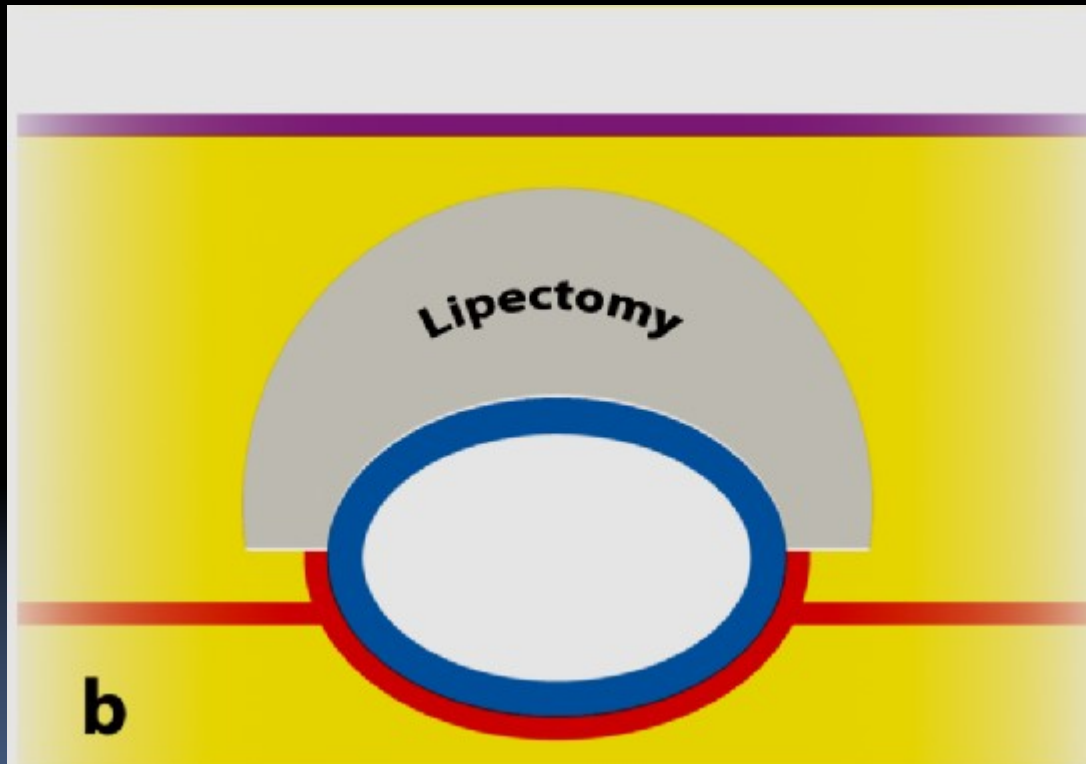
(Bourquelot et al. JVS 2009)

Preop. Duplex



Operating diagram: During

L.



skin

adipose
tissue

fascia
superficialis

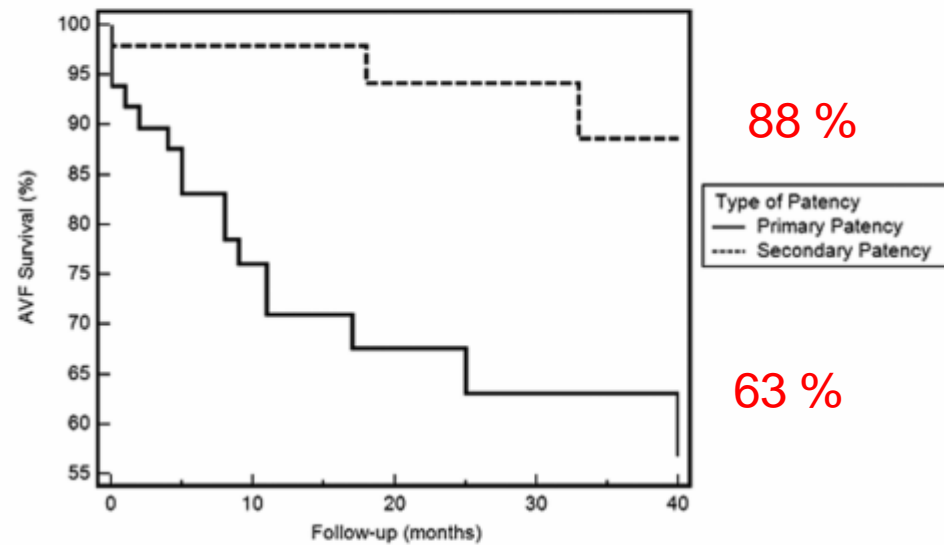
vein

Superficialisation par lipectomie



3-year patency rates (Kaplan-Meier)

JVS 2009



Number at risk

Group: 1

45	30	19	12	10
----	----	----	----	----

Group: 2

47	35	25	18	13
----	----	----	----	----

FAV Céphal i que- Superfi ci al i sati on

Tunnelisation

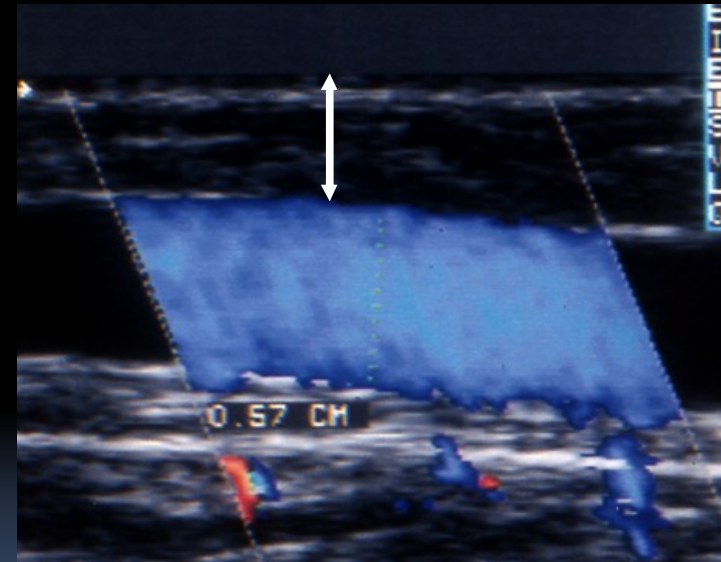


Lipectomie



Obésité :

-> FAV autologue distale +++ Pas de PTFE



pbourquelot@sfav.org