



GETTING GOING WITH BUTTON-HOLING

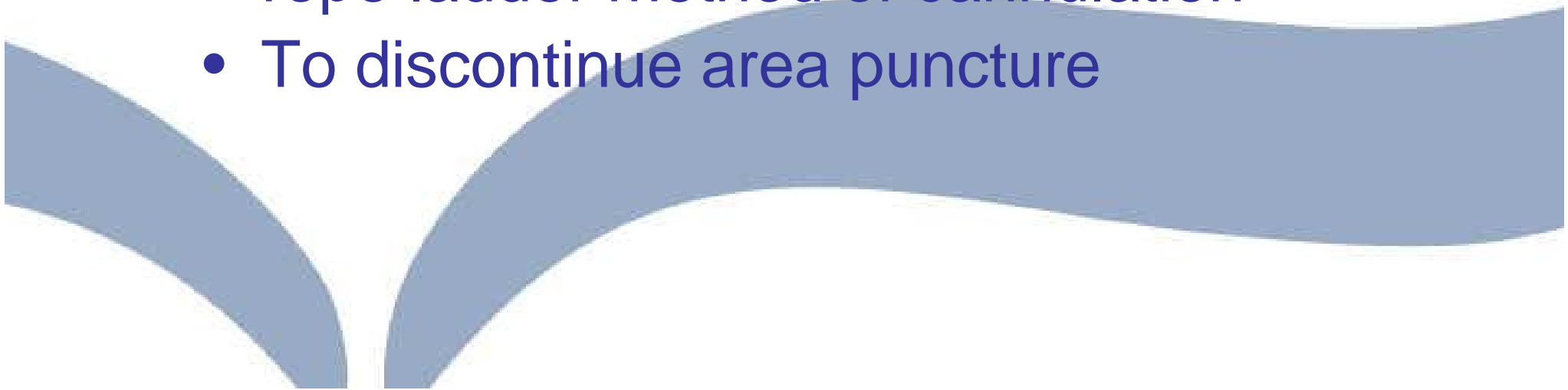
Department of Vascular Surgery and Renal
Medicine
Aberdeen Royal Infirmary
Scotland

Jacqueline Ross (Ward Manager)

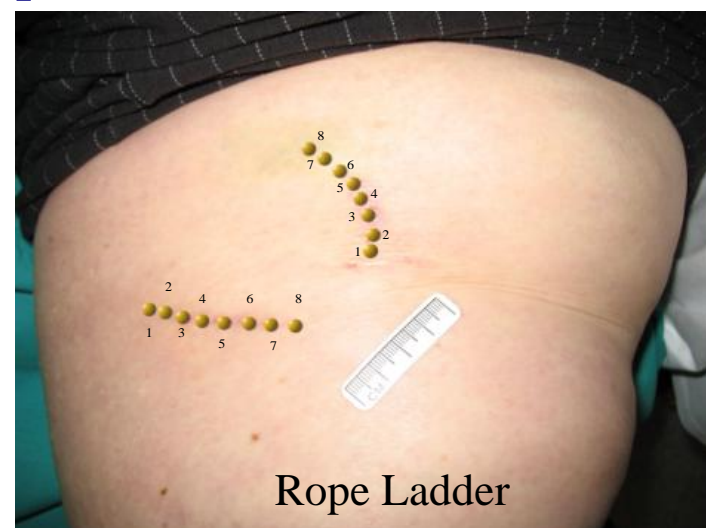
11th June 2007

Jacqueline Annand (Senior Staff Nurse)


Aims

- To improve quality of care for patients
 - To prolong life of native AV fistulas
 - Establish patients on buttonhole or rope ladder method of cannulation
 - To discontinue area puncture
- 
- A decorative graphic at the bottom of the slide consisting of several overlapping, curved, light blue shapes that create a wavy, abstract pattern.

Examples of Cannulation Techniques



Buttonhole (Constant Site) Technique

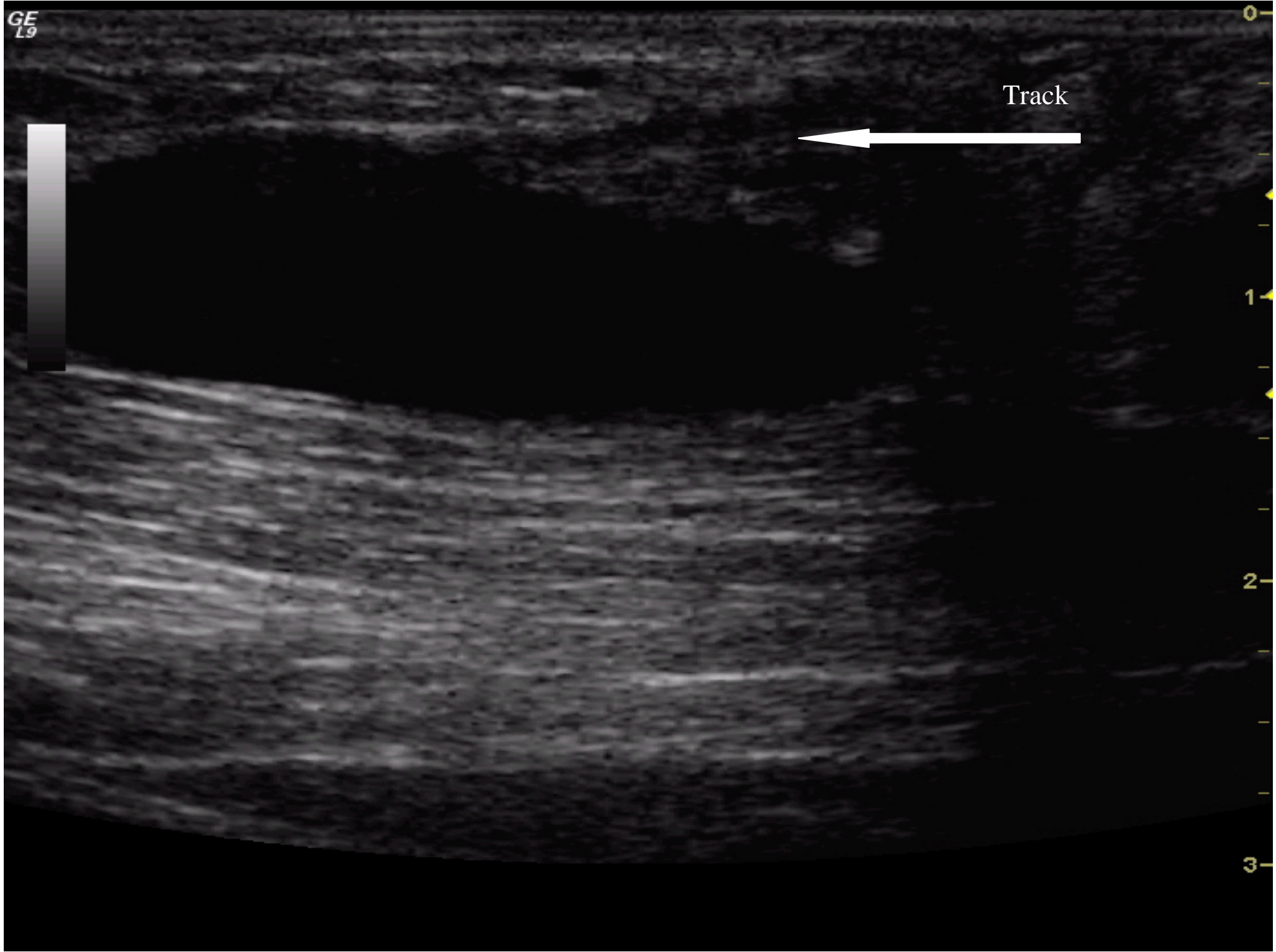
- Insert needle into exact same site, angle and depth each and every cannulation
 - Scar tissue tunnel track formed
 - AV Fistula only
 - Can be used to salvage fistulas already having area puncture – brand new sites
 - Appears in K/DOQI Guidelines 2006
- 
- A decorative graphic at the bottom of the slide consisting of a thick, light blue wave that spans across the width of the page, with a smaller, similar wave on the left side.

GE
L9

Track



0
1
2
3



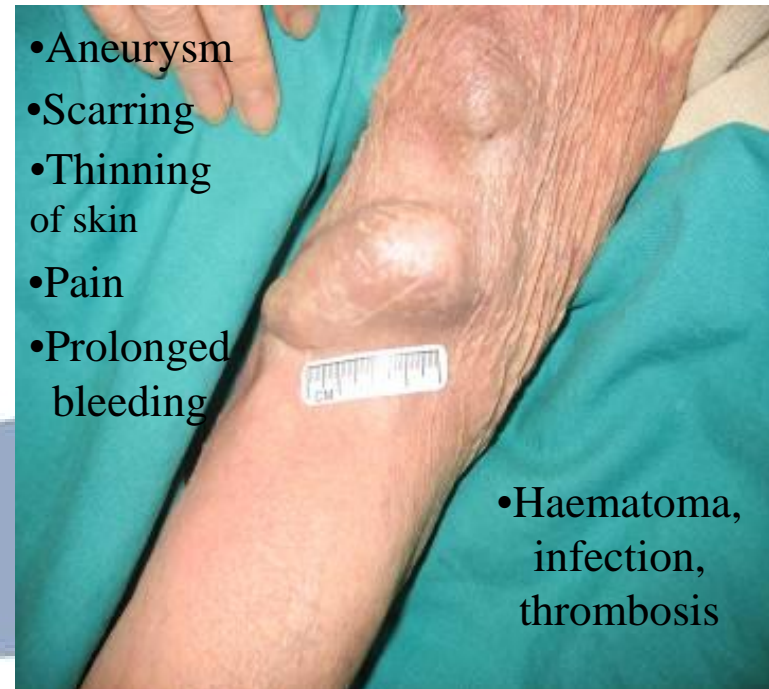
Comparison of Buttonhole V Area Puncture – After 5 Years of Puncture



- Ease of cannulation
- Self cannulation
- Fewer hospital admissions



- Aneurysm
- Scarring
- Thinning of skin
- Pain
- Prolonged bleeding



- Haematoma, infection, thrombosis

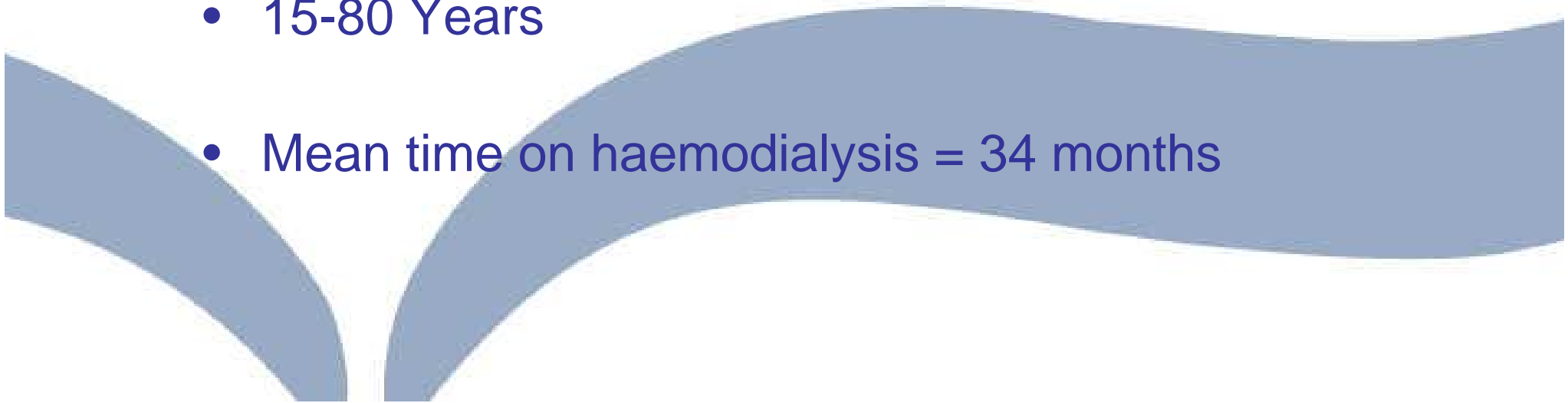
Example of Buttonhole - Converted



Buttonhole Audit

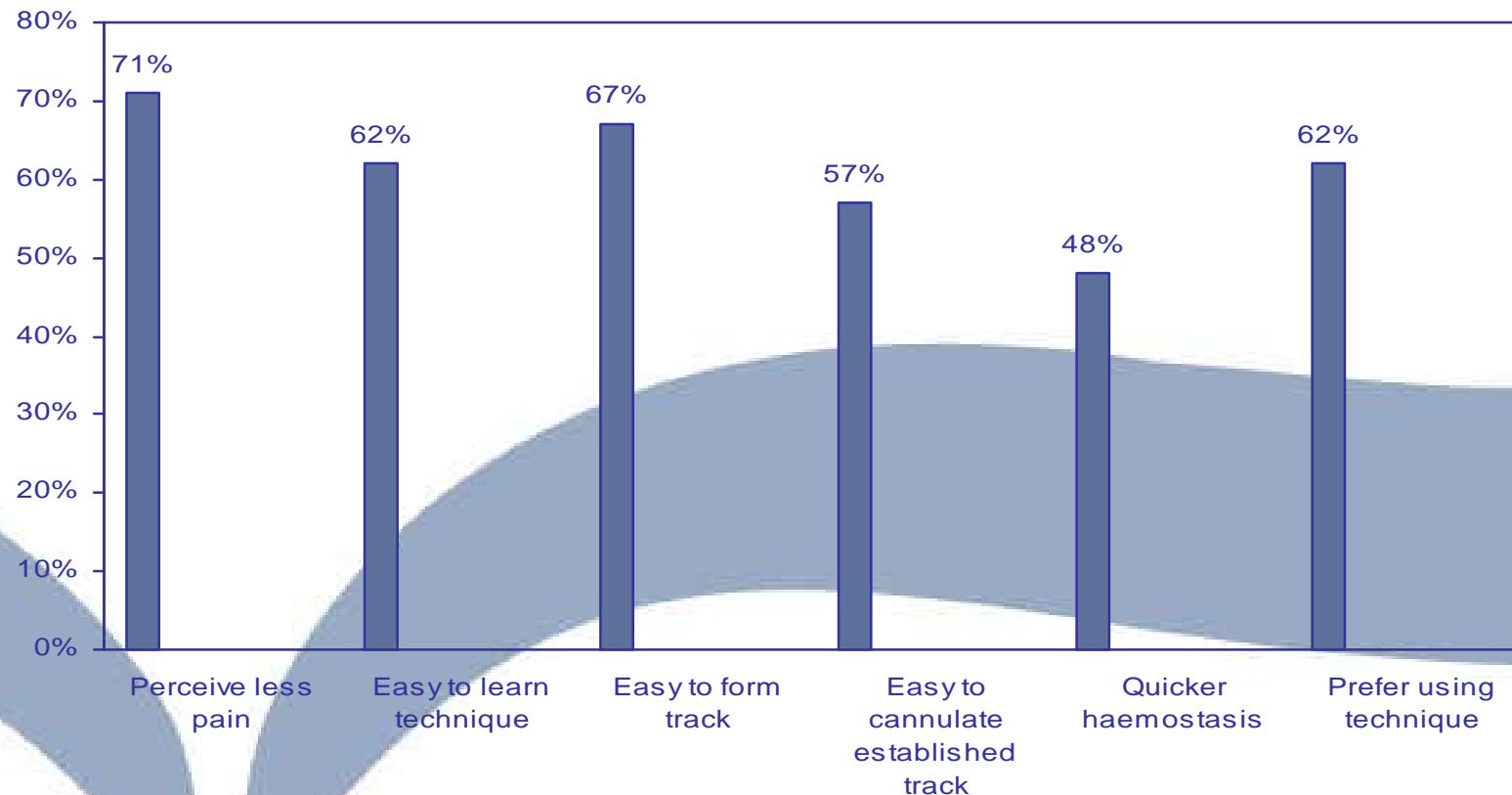
- Demographics
 - Staff experience
 - Patient experience
 - Complications
 - Statistics
- 
- A large, decorative graphic at the bottom of the slide consisting of several overlapping, wavy, light blue shapes that create a sense of movement and depth.

Demographics


- Audit from April 2006 - April 2007
 - 42 Patients 25 male 17 female
 - 15-80 Years
 - Mean time on haemodialysis = 34 months
- 
- A large, decorative blue wavy graphic that spans the bottom of the slide, partially overlapping the text of the last bullet point.

Staff Questionnaire 21/21

100% response

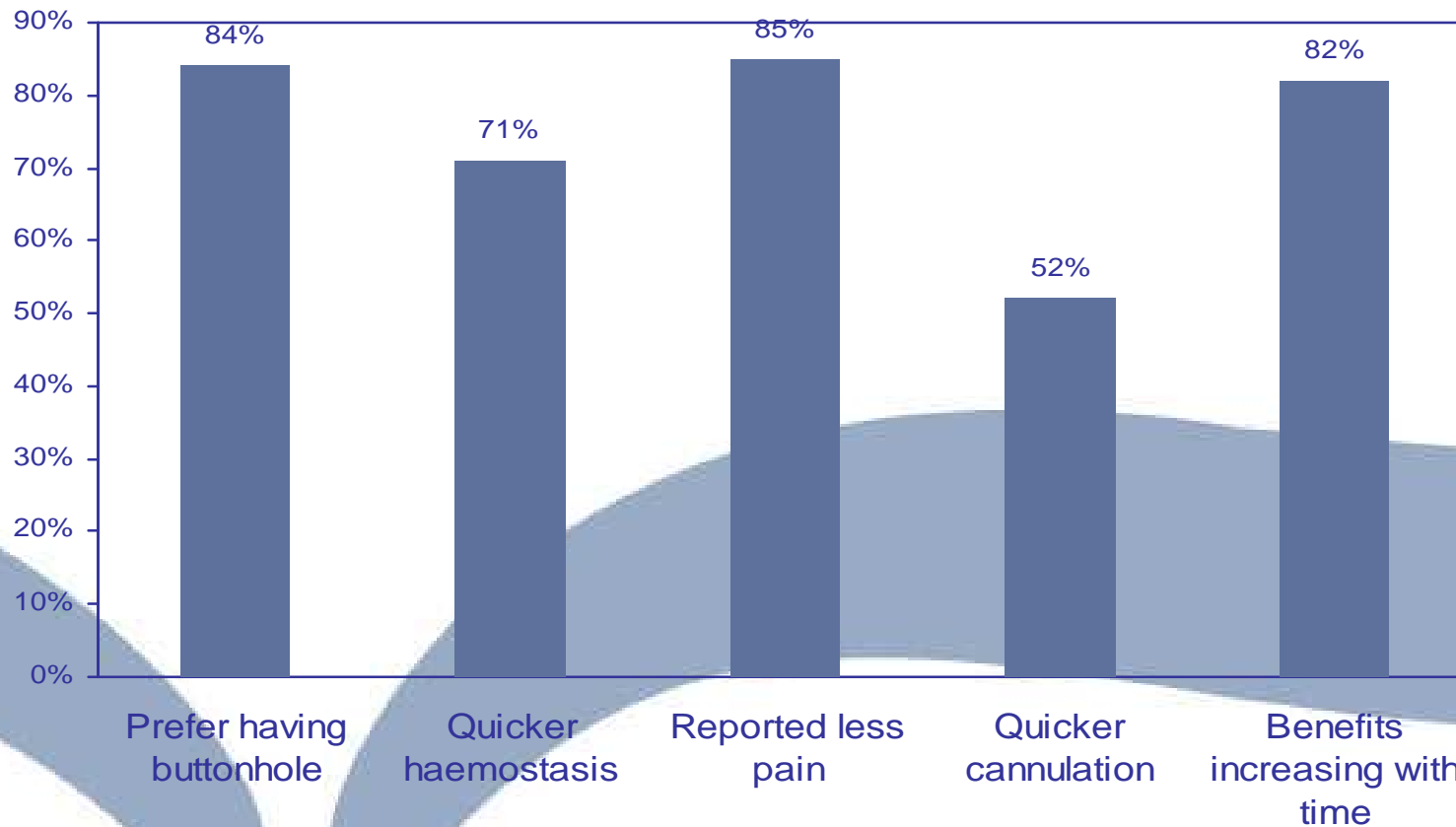


Problems Encountered During Implementation

- Rostering one of group of 3 nurses (track formers) to coincide with patient appointment time
 - Patient dialysing in different Renal Unit who do not use the technique
- 
- A decorative blue wavy bar at the bottom of the slide, consisting of several curved segments in a light blue color.

Patient Questionnaire 36/42

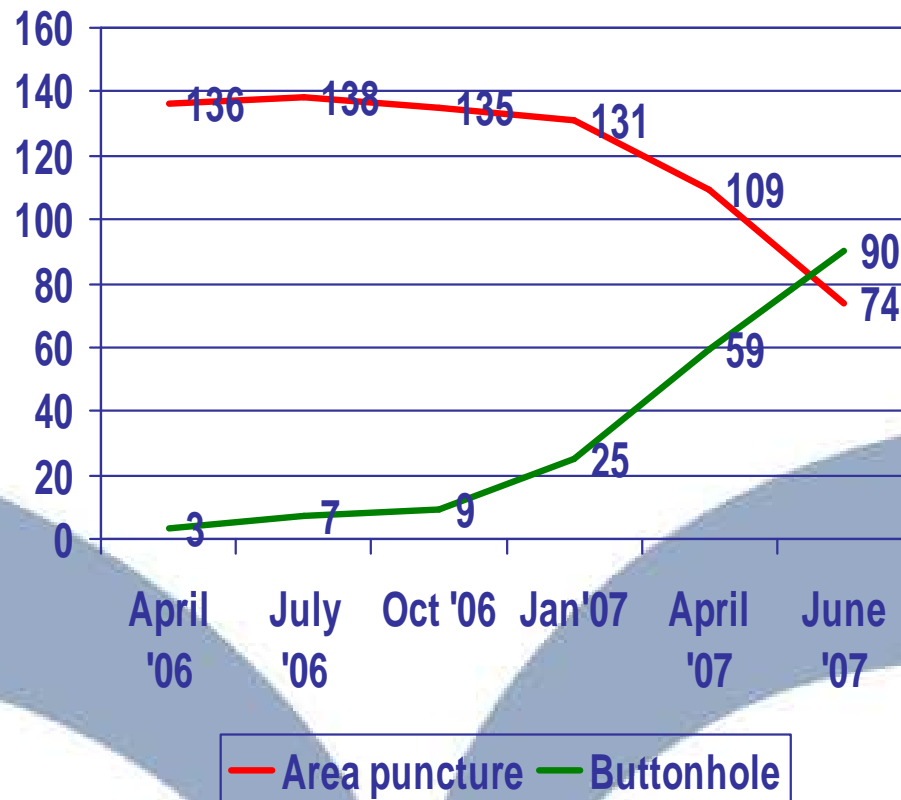
86% response



Complications During Audit

- Infiltration - 2 episodes out of 850 cannulations (0.2%)
- Trampoline - 2 patients out of 42 (4.7%)
- Site changes - 7 sites out of 84 (8.3%)
- Intermittent sharps - 8 patients out of 42 (19%)
- No technique failure

Our Past, Present and Future of Cannulation



Future

- Continue converting current fistulas
- Use technique for all new fistulas
- Continue to audit, report and educate on all findings.

Conclusion

The Buttonhole technique warrants further clinical trials.

Buttonhole cannulation appears to be associated with fewer complications as compared with using multiple needle sites.

Access preservation and prevention of possible complications improves patients experience of haemodialysis.

Acknowledgements

- Patients and staff of Renal Medicine Department, Aberdeen Royal Infirmary
- Department of Vascular Surgery, Aberdeen Royal Infirmary

jacquelineross@nhs.net
j.annand@nhs.net